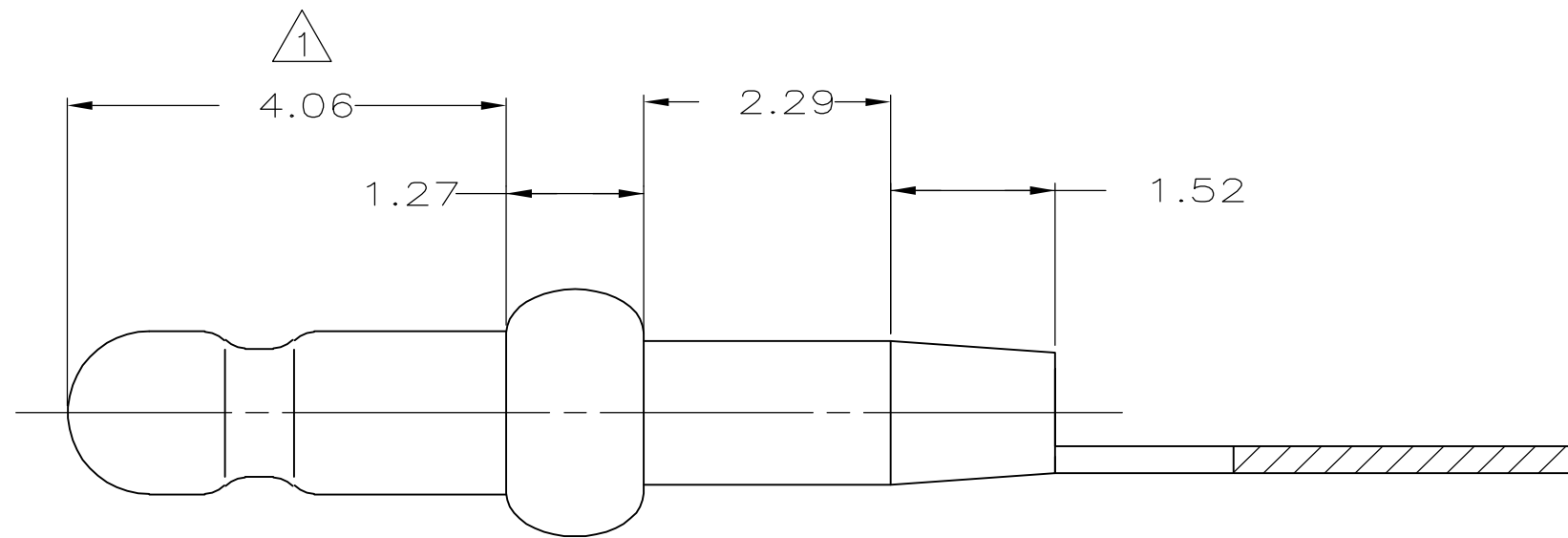
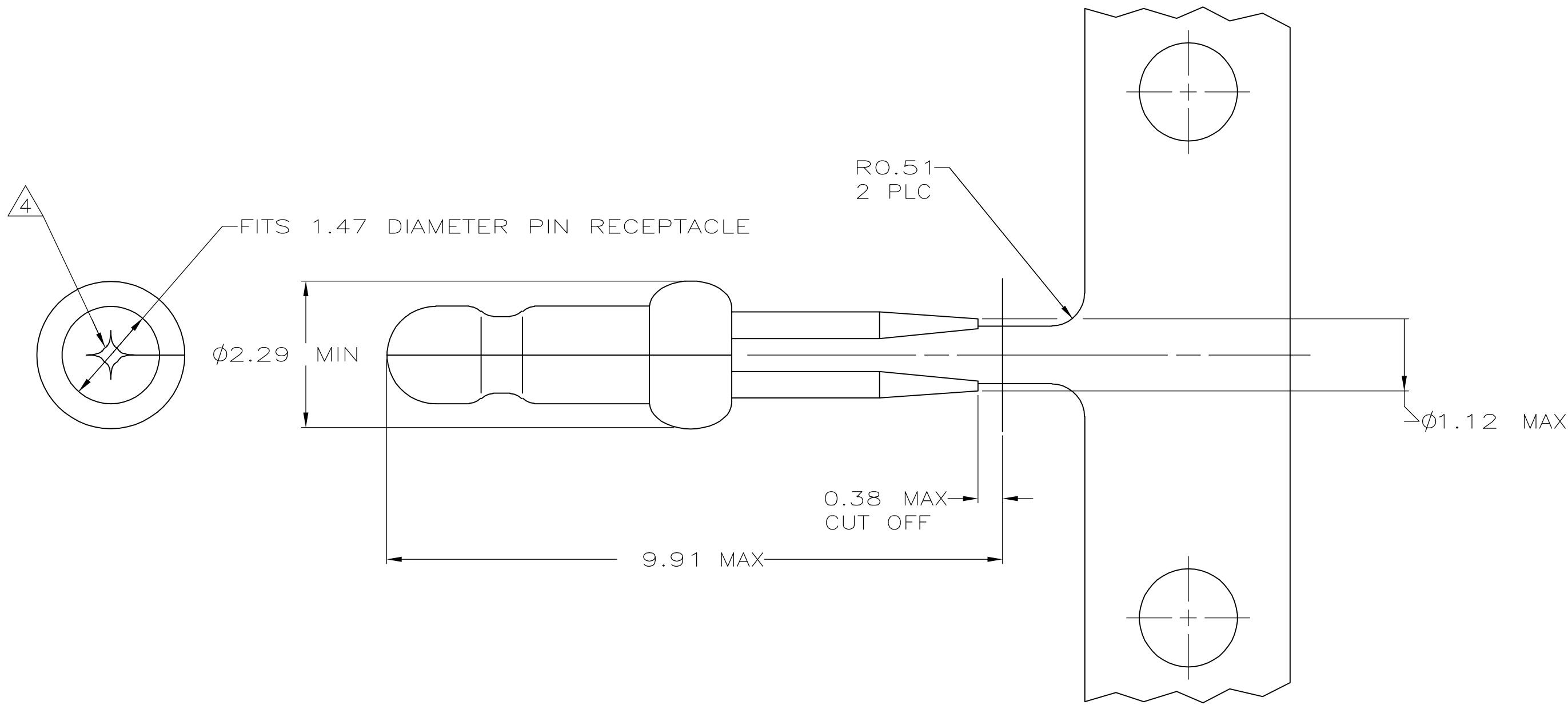
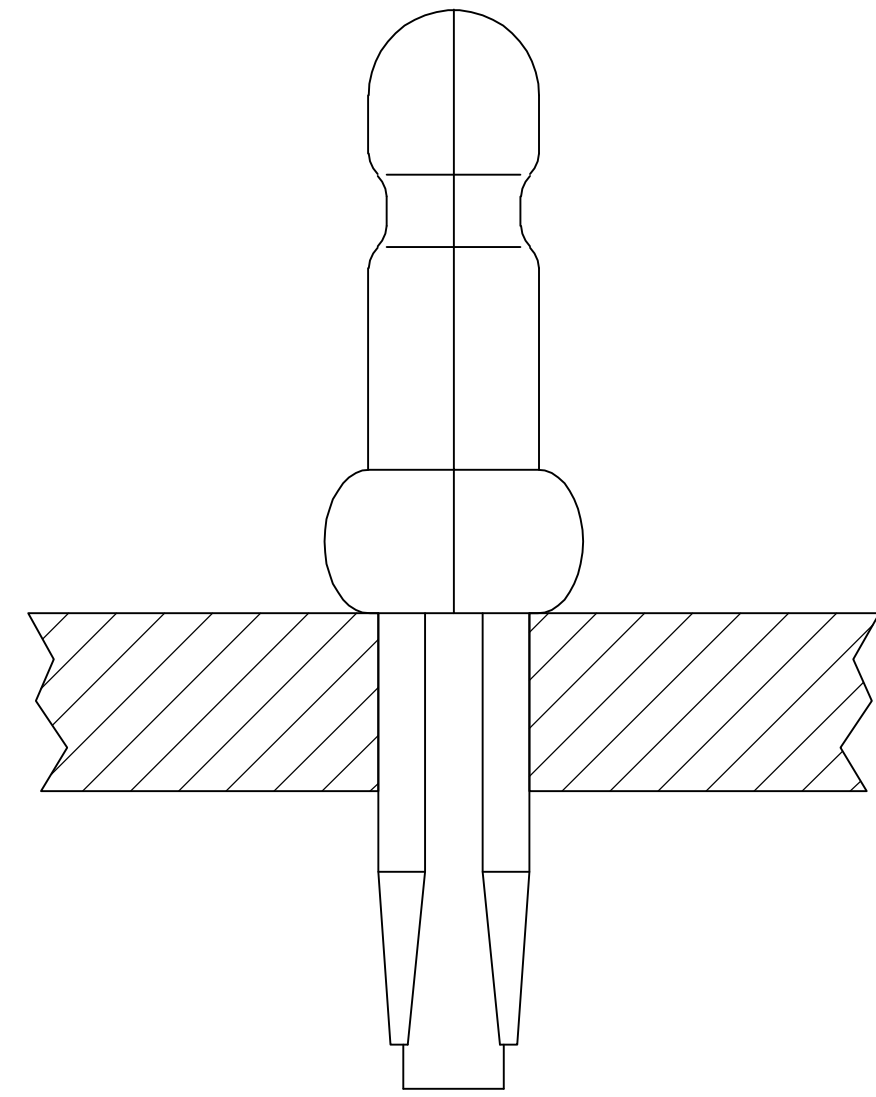


THIS DRAWING IS UNPUBLISHED. RELEASED FOR PUBLICATION  
 © COPYRIGHT BY TYCO ELECTRONICS CORPORATION. ALL RIGHTS RESERVED.

LOC		DIST		REVISIONS			
P	LTR	DESCRIPTION		DATE	DWN	APVD	
	AP1	REVISED PER ECO-05-015502		07DEC05	KW	JE	



- 0.00076 MIN GOLD PLATING IN THIS AREA WITH 0.00381 MIN MATTE TIN LEAD ON THE REMAINDER, BOTH OVER 0.00127 MIN NICKEL UNDERPLATE.
- FITS 1.17 - 1.27 DIAMETER HOLE IN A 1.57 OR 2.36 PRINTED CIRCUIT BOARD.
- PARTS TO COMPLY WITH AMP SOLDERABILITY SPECIFICATION 109-11-3.
- 0.05 - 0.25 DIAMETER OPENING REQUIRED IN TIP OF PIN.
- APPLICATOR FEED: 8.00 - 8.26
- 0.00076 MIN GOLD PLATING IN THIS AREA WITH 0.00381 MIN MATTE TIN ON THE REMAINDER, BOTH OVER 0.00127 MIN NICKEL UNDERPLATE.



6	3-60802-1
PRE TIN	60802-2
1	60802-1
FINISH	PART NUMBER

MM	IN	MM	IN	MM	IN	MM	IN
0.13	.005	1.17	.046	2.29	.090	9.91	.390
0.05	.002	1.12	.044	1.57	.062	8.26	.325
0.00381	.000150	0.51	.020	1.52	.060	8.00	.315
0.00127	.000050	0.38	.015	1.47	.058	4.06	.160
0.00076	.000030	0.25	.010	1.27	.050	2.36	.093

CONVERSION TABLE

**METRIC**

THIS DRAWING IS A CONTROLLED DOCUMENT.

DWN	T. BECK	7-28-97
CHK	R. SWING	7-28-97
APVD	A. BEDDICK	9-10-97

tyco Electronics  
 Tyco Electronics Corporation  
 Harrisburg, PA 17105-3608

NAME: PIN, .058 DIAMETER, PHOSPHER BRONZE, PRESS FIT, P.C. CONTACT

SIZE	CAGE CODE	DRAWING NO	RESTRICTED TO
A2	00779	C=60802	-

MATERIAL: 0.25 PH BRZ  
 DIMENSIONS: mm  
 TOLERANCES UNLESS OTHERWISE SPECIFIED:  
 0 PLC ± -  
 1 PLC ± -  
 2 PLC ± 0.13  
 3 PLC ± -  
 4 PLC ± -  
 ANGLES ± -  
 FINISH: SEE TABLE

PRODUCT SPEC: 108-1025  
 APPLICATION SPEC: 114-1008  
 WEIGHT: -  
 CUSTOMER DRAWING

SCALE: 15:1  
 SHEET: 1 of 1  
 REV: AP1